



University of Twente

Architecture Alignment in a Large
Government Organization: A Case Study

Roel Wieringa, Pascal van Eck, Henk Blanken

CAiSE-04 Forum, Riga, Latvia, June 9-11



University of Twente
The Netherlands

Agenda

- Project GRAAL
- Case studies: common misconceptions
- Main findings
 - Alignment at the application level
 - Alignment at the infrastructure level
- Conclusions

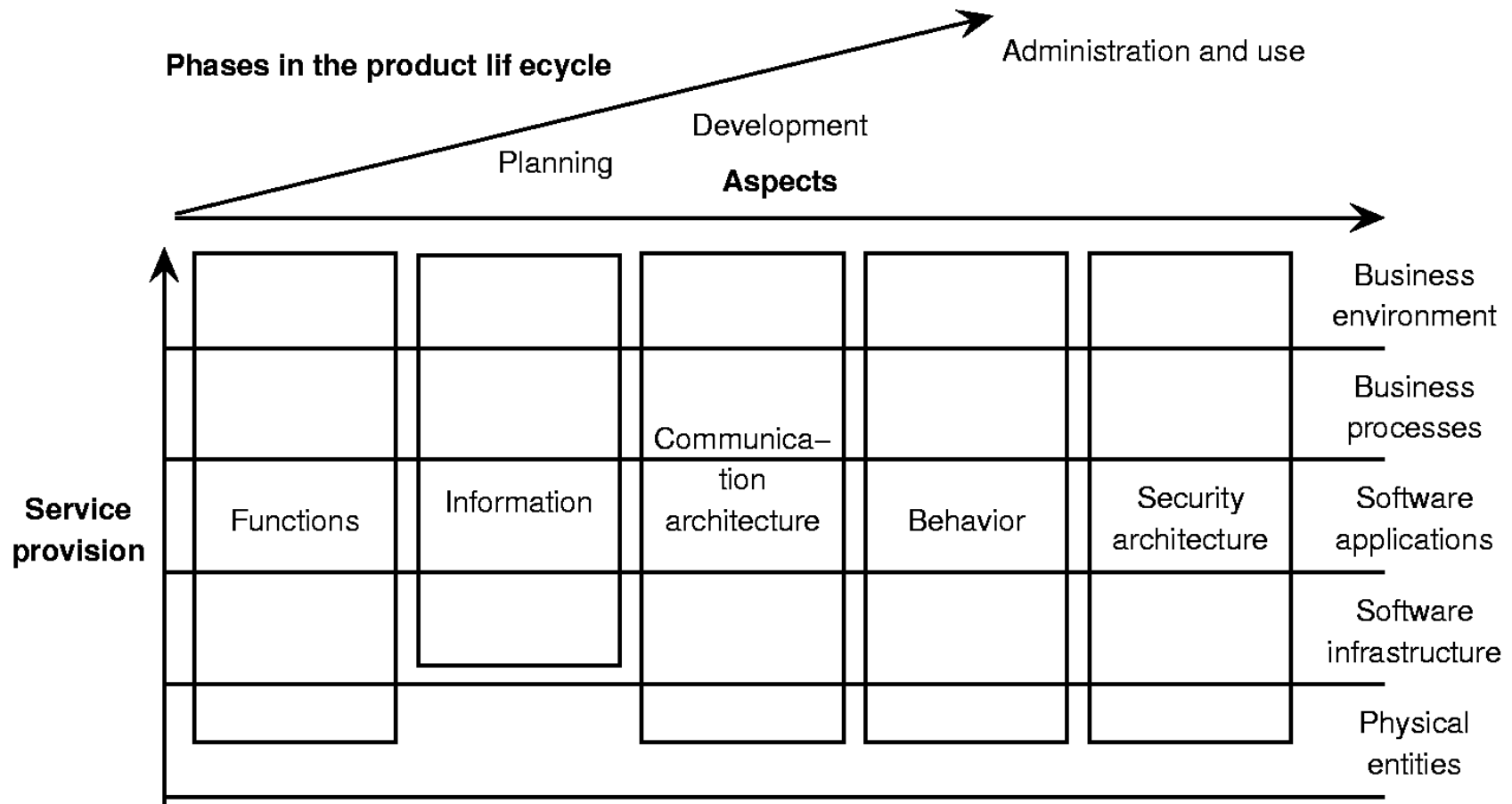
Project GRAAL

- Guidelines Regarding Architecture
ALignment
- Goal: to discover patterns in enterprise-level application architecture
- Based on case studies in Dutch financial services industry and large government branches

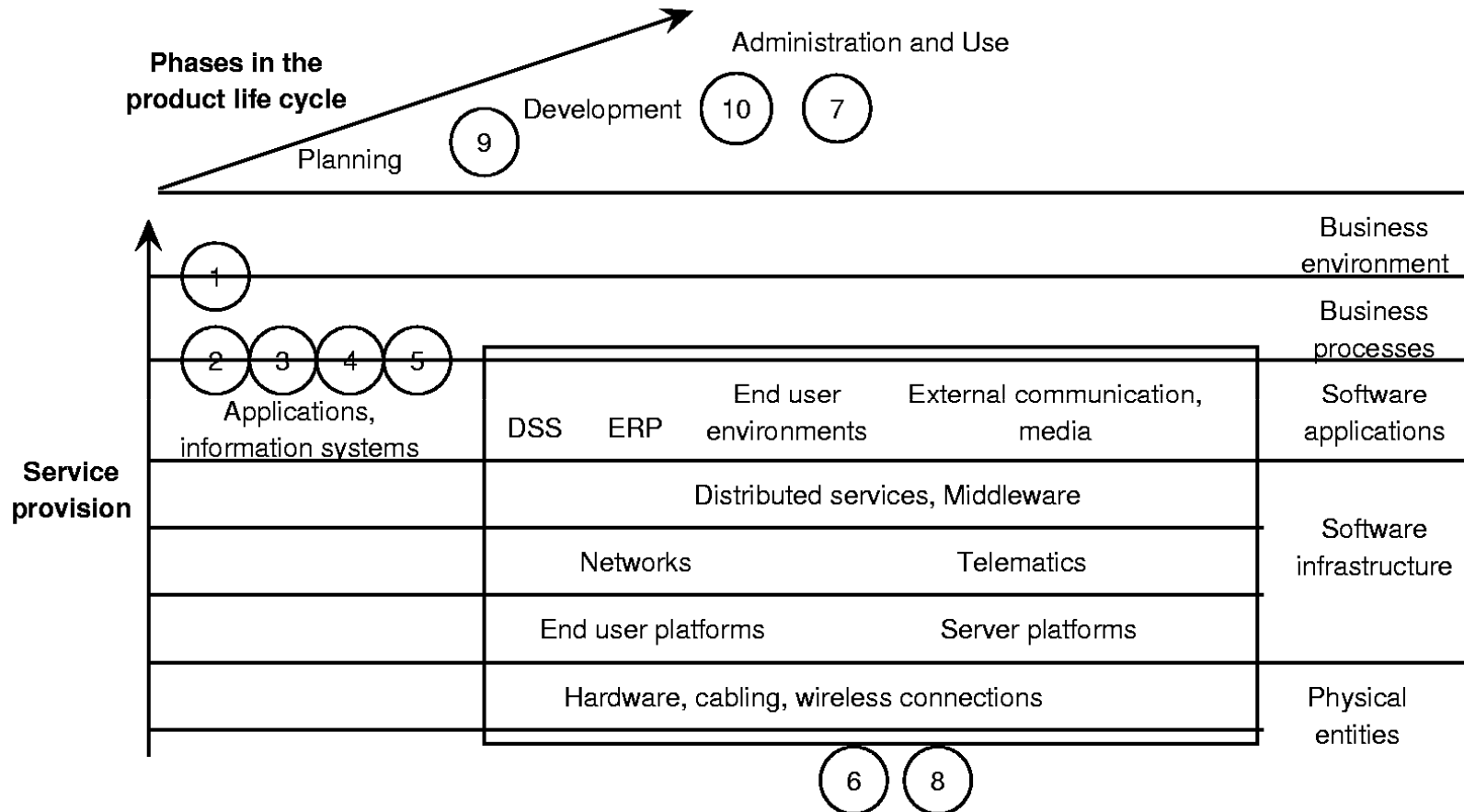
Case studies: common misconceptions

- “Case study research needs many ‘random’ cases”
 - Case studies generalize to theory, not to a population
 - Multiple case studies add confidence
- “Case study research = action research”
 - Action research involves changing conditions (‘disturbing the environment’)

GRAAL framework



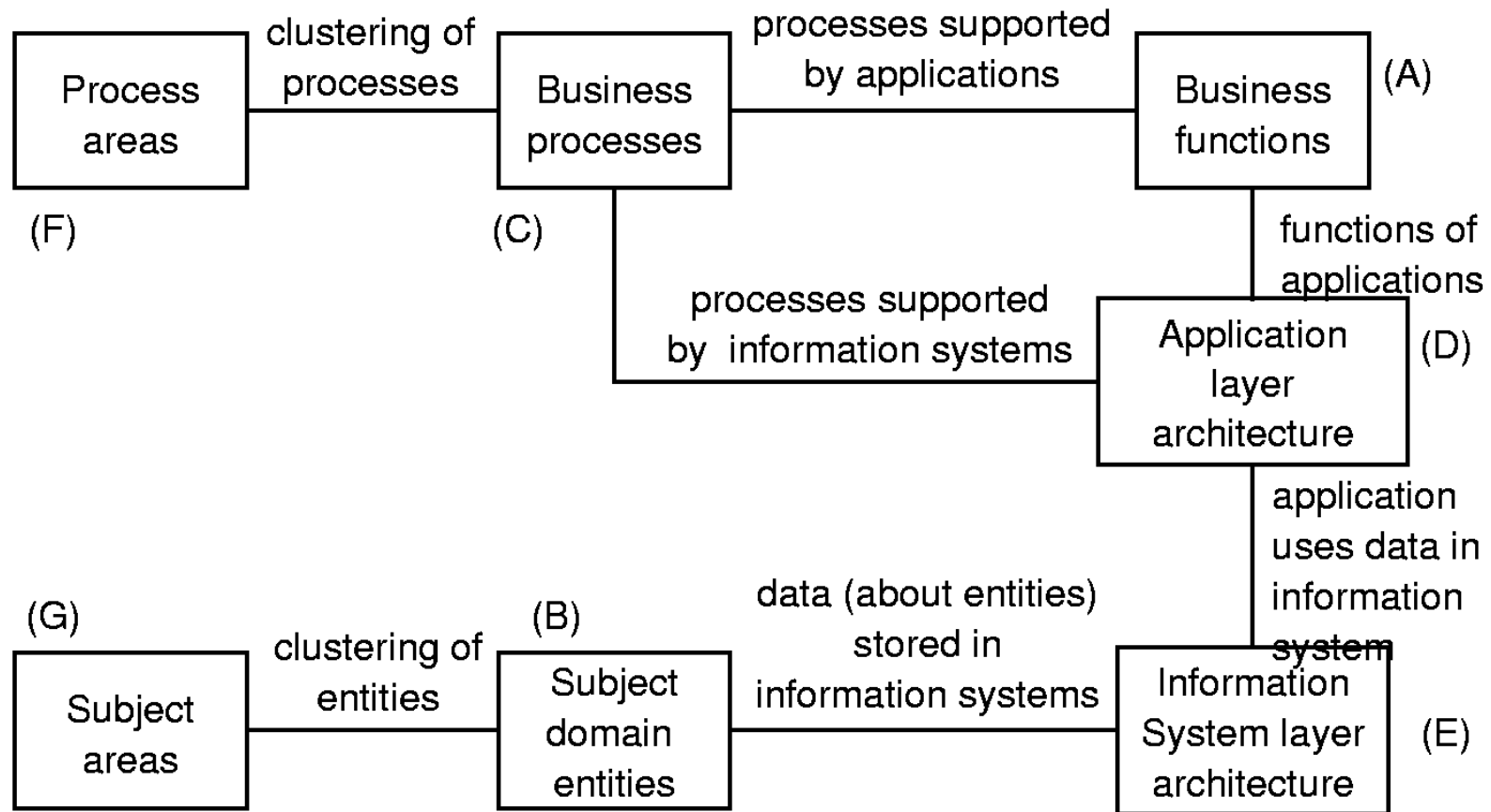
Documents studied



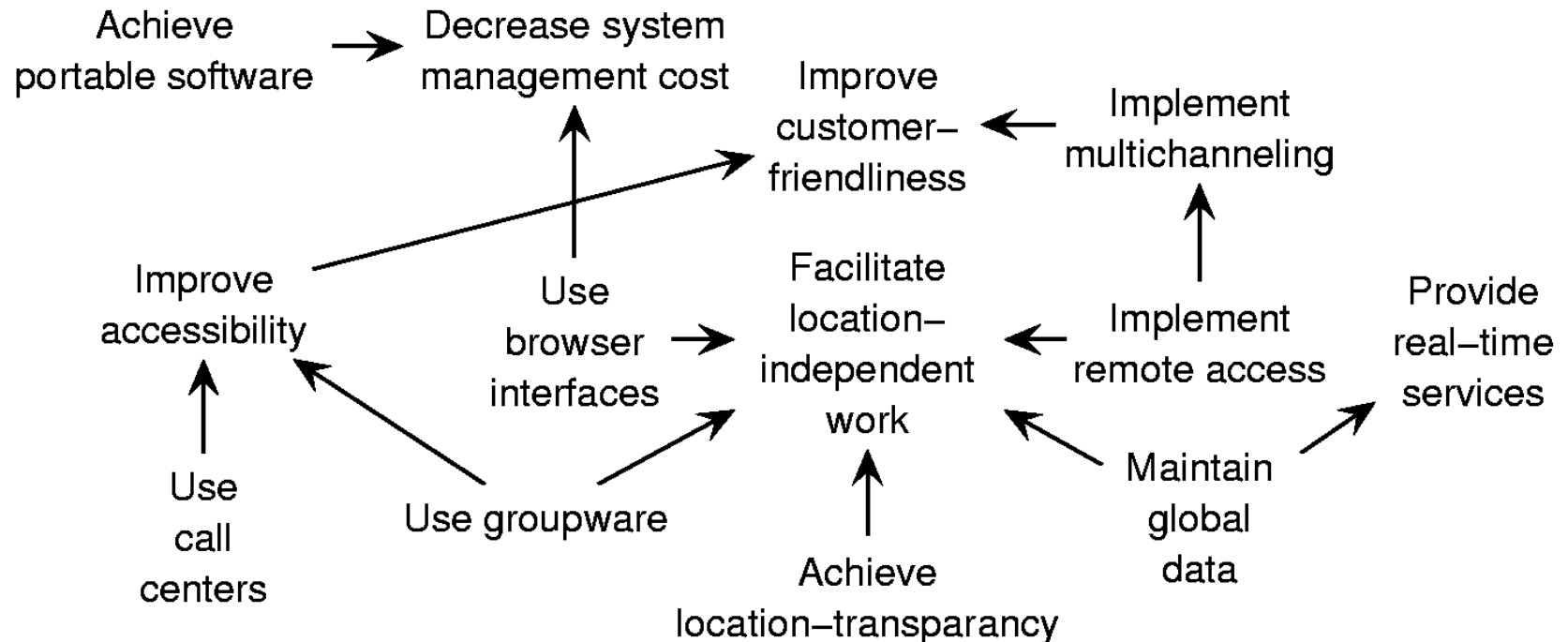
Main findings

- Development of **application level** and **infrastructure level** are different
 - Application level:
 - **Event-driven**
 - Structured according to **user groups**
 - Infrastructure level:
 - **Time-triggered**
 - Structured according to **technology domains**

Application alignment



Goals



Problems

many applications use outdated parts
of the infrastructure

There is no time to transfer functionality
from old infrastructure components
to new infrastructure components

It takes a long time to phase out
the outdated parts of the infrastructure

Complexity of infrastructure increases

Infrastructure management cost increases

Causal
relationships
between
phenomena



Management costs must be
lower than X Euro per year

Conflict

Norm

Conclusion

- Exploratory case study to find hypotheses for architecture alignment research
 - To be validated in further case studies
- Architecture alignment at the application level differs from infrastructure level
 - Does misalignment result from this?